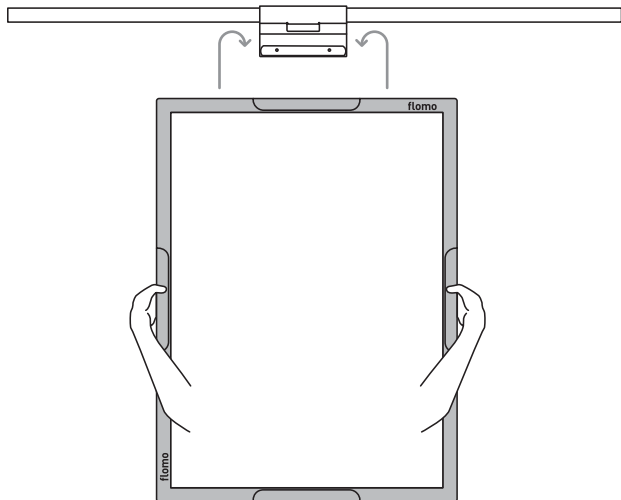


Flomo Rail Installation Guide

Contents



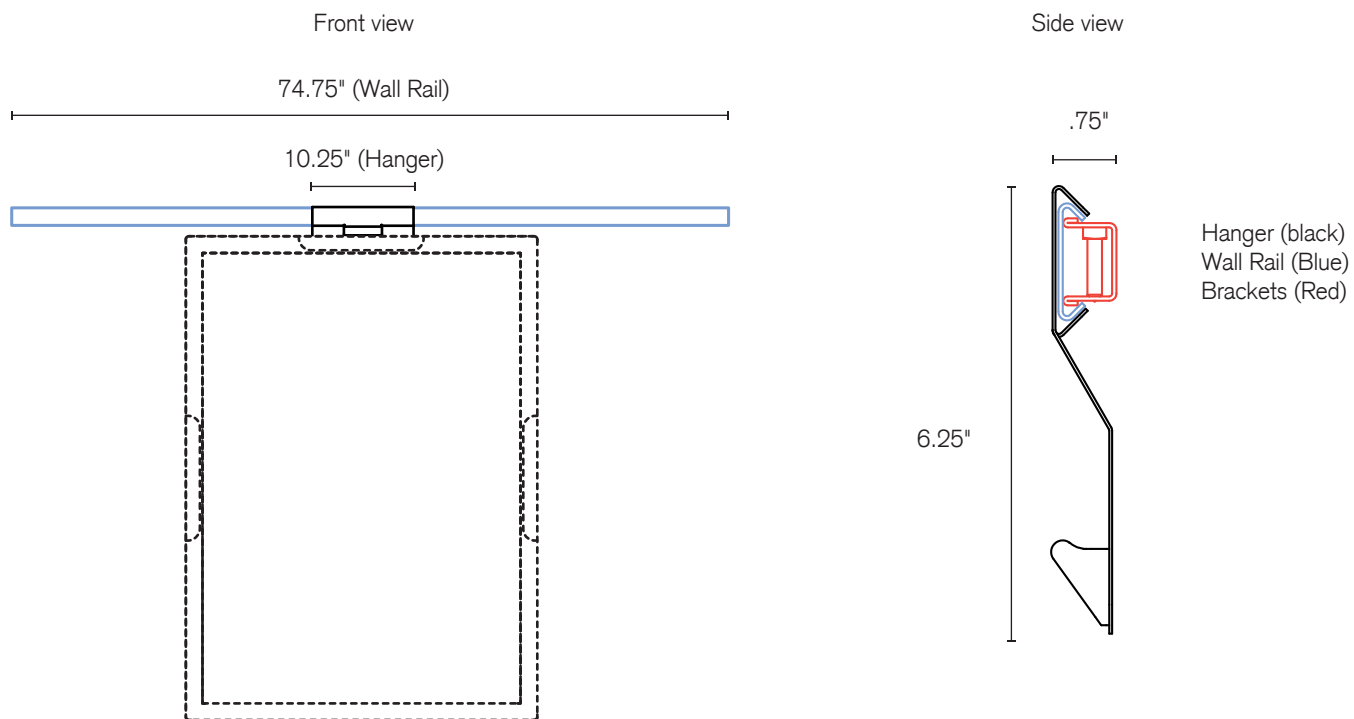
Included

- Wall rail x 1
- Sliding Hanger x 2
- Wall brackets x 3

Excluded

Due to the varying nature of wall types, wall fixings are not provided.

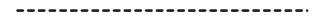
Dimensions



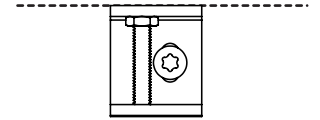
Flomo Rail Installation Guide

Step by step

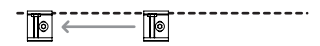
01 Take a spirit level and draw a straight line where you would like your Flomo rail to be positioned.



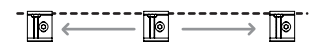
02 Next, take a wall bracket and fix it to the wall on the center of your line (aiming to hit a wall stud)



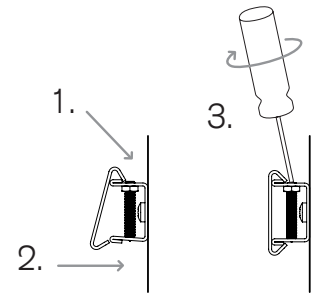
03 Next, locate a wall stud to the left of the center wall bracket (roughly 32" away)



04 For the right wall bracket, measuring off from the center bracket to the right by roughly 32", aiming to locate a wall stud to fix the wall bracket firmly to.



06 Once all three wall brackets are in place, pop the wall rail onto the brackets (1. & 2.) and then tighten each bracket (3.) until you are happy the wall rail is firmly in place.



07 You can then add a sliding hanger onto the rail, and hang a Flomo Board either in the vertical or horizontal position via the recesses in the rearside of Flomo.

